

# Twin system: transforms the commercial range into a Dual air conditioner

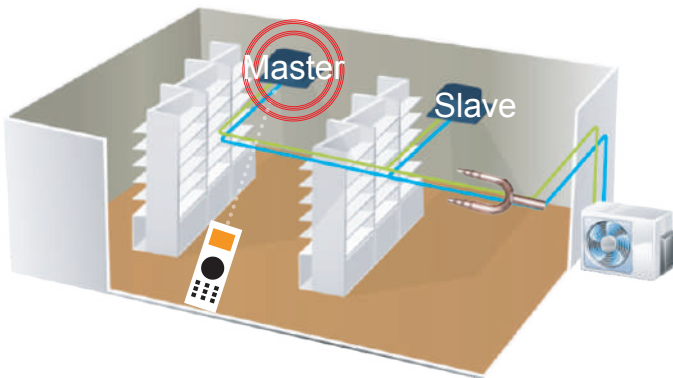


## TWIN SYSTEM:

In the new Twin system, some outdoor units can be connected to two indoor units having the same capacity between them by means of a particular connection that can be purchased separately. It is possible to transform into a Twin system only the indoor units of the cassette, duct type and floor ceiling type.

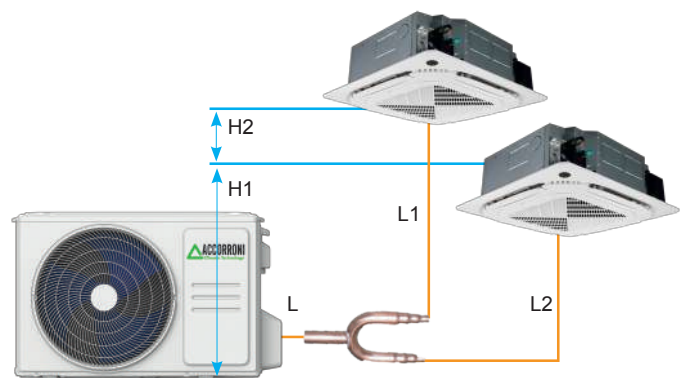
The control system allows operation of the two units

**in perfect "tandem". The secondary unit (slave) will work in the same state as the main unit: working mode, set temperature, fan speed will be the same. The power delivered by the two indoor units is bound by the power delivered by the associated outdoor unit. When the main unit stops, the slave unit will also stop.**



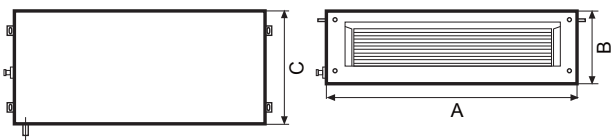
| Combinations | Indoor units | Outdoor units |
|--------------|--------------|---------------|
|              | 25+ 25       | 50            |
|              | 38 + 38      | 60            |

|               |   |       |     |                |
|---------------|---|-------|-----|----------------|
| Piping length | Total piping length                                       | 25+25 | 65  | L+MAX (L1, L2) |
|               |   | 38+38 | 65  |                |
|               | Farthest distance from the branch of the line pipe        |       | 15  | L1, L2         |
|               | Farthest distance from the branch of the line pipe        |       | 10  | L1-L2          |
|               | Difference in height between indoor unit and outdoor unit |       | 20  | H1             |
| Dislevel      | Difference in height between two indoor units             |       | 0,5 | H2             |

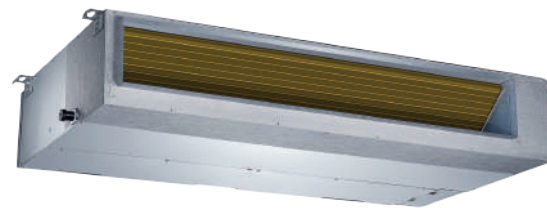


# COMMERCIAL LINE DUCTED DC INVERTER

## Split system air conditioners



SCOP =  
**A+++**



WIRED CONTROL, FILTER,  
CONDENSATE DRAIN PUMP

|                     | A    | B   | C   |      |
|---------------------|------|-----|-----|------|
|                     | mm   | mm  | mm  | kg   |
| DUCTED 12 INVERTER  | 700  | 200 | 506 | 17,8 |
| DUCTED 20 INVERTER  | 880  | 210 | 674 | 24,4 |
| DUCTED 25 INVERTER  | 1100 | 249 | 774 | 32,3 |
| DUCTED 38M INVERTER | 1360 | 249 | 774 | 40,5 |

|                     | A    | B   | C   |      |
|---------------------|------|-----|-----|------|
|                     | mm   | mm  | mm  | kg   |
| DUCTED 38T INVERTER | 1360 | 249 | 774 | 40,5 |
| DUCTED 50 INVERTER  | 1200 | 300 | 874 | 47,6 |
| DUCTED 60 INVERTER  | 1200 | 300 | 874 | 47,4 |

| MODEL                                  |               | COOLING POWER<br>kW | THERMAL POWER<br>kW | €        |
|--|---------------|---------------------|---------------------|----------|
| DUCTED 12 DC INVERTER U.I.             | cod. 63000039 | 3,51 (0,53÷5,8)     | 3,81 (1,0÷4,3)      | 924,00   |
| OUTDOOR UNIT 12 DC INVERTER U.E.       | cod. 63000016 |                     |                     | 1.092,00 |
| DUCTED 20 DC INVERTER U.I.             | cod. 63000041 | 5,27 (2,55÷5,8)     | 5,57 (2,2÷6,1)      | 1.156,00 |
| OUTDOOR UNIT 20 DC INVERTER U.E.       | cod. 63000018 |                     |                     | 1.520,00 |
| DUCTED 25 DC INVERTER U.I.             | cod. 63000043 | 7,03 (3,28÷8,16)    | 7,62 (2,81÷8,49)    | 1.181,00 |
| OUTDOOR UNIT 25 DC INVERTER U.E.       | cod. 63000020 |                     |                     | 1.930,00 |
| DUCTED 38M FASE DC INVERTER U.I.       | cod. 63000045 | 10,55 (2,75÷11,14)  | 11,72 (2,78÷12,78)  | 1.420,00 |
| OUTDOOR UNIT 38M FASE DC INVERTER U.E. | cod. 63000022 |                     |                     | 3.249,00 |
| DUCTED 38T FASE DC INVERTER U.I.       | cod. 63000045 | 10,55 (2,75÷11,14)  | 11,72 (2,78÷12,78)  | 1.420,00 |
| OUTDOOR UNIT 38T FASE DC INVERTER U.E. | cod. 63000023 |                     |                     | 3.302,00 |
| DUCTED 50 DC INVERTER U.I.             | cod. 63000048 | 14,07 (2,93÷12,31)  | 16,02 (3,37÷14,07)  | 1.624,00 |
| OUTDOOR UNIT 50 DC INVERTER U.E.       | cod. 63000025 |                     |                     | 3.876,00 |
| DUCTED 60 DC INVERTER U.I.             | cod. 63000050 | 15,24 (4,10÷17,29)  | 18,17 (4,40÷20,52)  | 1.860,00 |
| OUTDOOR UNIT 60 DC INVERTER U.E.       | cod. 63000027 |                     |                     | 4.374,00 |

| TECHNICAL DATA       | UM     | DUCTED 12       | DUCTED 20       | DUCTED 25        | DUCTED 38M         | DUCTED 38T         | DUCTED 50          | DUCTED 60          |
|----------------------|--------|-----------------|-----------------|------------------|--------------------|--------------------|--------------------|--------------------|
| Cooling power        | kW     | 3,51 (0,53÷3,9) | 5,27 (2,55÷5,8) | 7,03 (3,28÷8,16) | 10,55 (2,75÷11,14) | 10,55 (2,75÷11,14) | 14,07 (3,51÷15,53) | 15,24 (4,10÷17,29) |
| Absorbed power*      | kW     | 1,05            | 1,53            | 2,19             | 3,95               | 4,00               | 4,80               | 5,20               |
| Current consumption* | A      | 4,75            | 7,10            | 10,20            | 17,50              | 6,50               | 8,40               | 9,60               |
| S.E.E.R.             |        | 6,3 <b>A+++</b> | 6,5 <b>A+++</b> | 6,2 <b>A+++</b>  | 6,2 <b>A+++</b>    | 6,1 <b>A+++</b>    | 6,1 <b>A+++</b>    | 6,1 <b>A+++</b>    |
| Thermal power        | kW     | 3,81 (1,0÷4,3)  | 5,57 (2,2÷6,1)  | 7,62 (2,81÷8,49) | 11,72 (2,78÷12,78) | 11,72 (2,78÷12,78) | 16,12 (4,10÷18,17) | 18,17 (4,40÷20,52) |
| Potenza Assorbita*   | kW     | 1,03            | 1,51            | 1,90             | 3,25               | 3,25               | 4,50               | 5,15               |
| Absorbed power*      | A      | 4,52            | 6,80            | 9,20             | 14,50              | 5,30               | 8,00               | 9,50               |
| S.C.O.P. Mid-range   |        | 4,0 <b>A+</b>   | 4,0 <b>A+</b>   | 4,0 <b>A+</b>    | 4,0 <b>A+</b>      | 4,0 <b>A+</b>      | 4,0 <b>A+</b>      | 4,0 <b>A+</b>      |
| S.C.O.P. Warm-range  |        | 5,1 <b>A+++</b> | 5,1 <b>A+++</b> | 5,1 <b>A+++</b>  | 5,1 <b>A+++</b>    | 5,1 <b>A+++</b>    | 5,0 <b>A+++</b>    | 5,1 <b>A+++</b>    |
| Power supply         |        | 230V/1/50Hz     | 230V/1/50Hz     | 230V/1/50Hz      | 230V/1/50Hz        | 380V/3+N/50Hz      | 380V/3+N/50Hz      | 380V/3+N/50Hz      |
| Air flow             | m³/h   | 600/480/300     | 911/706,3/515,2 | 1129/1035/825,1  | 2100/1800/1500     | 2100/1800/1500     | 2400/2040/1680     | 2600/2210/1820     |
| Prevalence           | Pa     | 0 - 60          | 0 - 100         | 0 - 160          | 0 - 160            | 0 - 160            | 0 - 160            | 0 - 160            |
| Sound level I.U.     | dB (A) | 34,5/32/30      | 42/39/35        | 49/46/41         | 50/49/47           | 50/49/47           | 51,5/49/47         | 52,5/49/47         |
| Length Piping        | m      | ≤ 25            | ≤ 30            | ≤ 50             | ≤ 75               | ≤ 75               | ≤ 75               | ≤ 75               |
| Dislevel units       | m      | ≤ 10            | ≤ 20            | ≤ 25             | ≤ 30               | ≤ 30               | ≤ 30               | ≤ 30               |
| Gas connections      |        | 3/8"            | 1/2"            | 5/8"             | 5/8"               | 5/8"               | 5/8"               | 5/8"               |
| Liquid connections   |        | 1/4"            | 1/4"            | 3/8"             | 3/8"               | 3/8"               | 3/8"               | 3/8"               |

\* Value referred to the sum of the external unit + internal unit absorptions (separate power supplies)

Cooling test conditions: int. 27 ° C d.b. / 19.5 ° C wb. - Ext. 35 ° C d.b. / 24 ° C wb.

Heating test conditions: int. 20 ° C db. - Ext. 7 ° C d.b. / 6 ° C wb.

# COMMERCIAL LINE DUCTABLE ACCESSORIES DC INVERTER

## Split system air conditioners

### DELIVERY PLENUM

Complete with circular connections made of PVC complete with external insulation and elastic sheath for joining the fan unit. The use of PVC ensures the best air quality combined with extreme lightness and long life.



| DELIVERY PLENUM WITH CIRCULAR CONNECTIONS |               | N. COLLARS AND DIAMETER | DIMENSIONS    | €      |
|---|---------------|-------------------------|---------------|--------|
| DELIVERY PLENUM12 DC INVERTER             | cod. 63000052 | 2 x 160 mm              | 537 X 152 mm  | 279,00 |
| DELIVERY PLENUM 20 DC INVERTER            | cod. 63000053 | 2 x 200 mm              | 706 X 136 mm  | 383,00 |
| DELIVERY PLENUM 25 DC INVERTER            | cod. 63000054 | 3 x 160 mm              | 926 X 175 mm  | 389,00 |
| DELIVERY PLENUM 38 DC INVERTER            | cod. 63000055 | 3 x 200 mm              | 1186 X 175 mm | 577,00 |
| DELIVERY PLENUM 50 DC INVERTER            | cod. 63000056 | 4 x 200 mm              | 1044 X 227 mm | 614,00 |
| DELIVERY PLENUM 60 DC INVERTER            | cod. 63000057 | 4 x 200 mm              | 1044 X 227 mm | 614,00 |

### DELIVERY PLENUM WITH ZONE MANAGEMENT

Complete with circular connections made of PVC, external insulation and elastic sheath for joining the fan unit. The use of PVC ensures the best air quality combined with extreme lightness and long life.

Equipped with a practical thermoregulation kit complete with motorized shutters already installed, advanced power module from 2 to 6 zones, 12V power supply, all wired. The regulation system of each zone can be controlled by a room thermostat already present, or, chosen from the many available on the market and is compatible with any model. The thermostat, through the connection to the regulation board, operates the regulation damper.

An automatic by-pass compensates for the back pressures generated by the closing of the control dampers.

When there is no need for heating / cooling, the system switches off the air conditioning unit.

On the contrary, as soon as any zone is activated by its thermostat, the system immediately activates the air conditioning unit.



| DELIVERY PLENUM WITH ZONE MANAGEMENT WITH CIRCULAR CONNECTIONS |               | N. COLLARS AND DIAMETER | DIMENSIONS    | €        |
|--|---------------|-------------------------|---------------|----------|
| ZONE MANAGEMENT DELIVERY PLENUM 12 DC INVERTER                 | cod. 63000058 | 2 x 160 mm              | 537 X 152 mm  | 1.452,00 |
| ZONE MANAGEMENT DELIVERY PLENUM 20 DC INVERTER                 | cod. 63000059 | 2 x 200 mm              | 706 X 136 mm  | 1.581,00 |
| ZONE MANAGEMENT DELIVERY PLENUM 25 DC INVERTER                 | cod. 63000060 | 3 x 160 mm              | 926 X 175 mm  | 1.785,00 |
| ZONE MANAGEMENT DELIVERY PLENUM 38 DC INVERTER                 | cod. 63000061 | 3 x 200 mm              | 1186 X 175 mm | 2,014,00 |
| ZONE MANAGEMENT DELIVERY PLENUM 50 DC INVERTER                 | cod. 63000062 | 4 x 200 mm              | 1044 X 227 mm | 2,177,00 |
| ZONE MANAGEMENT DELIVERY PLENUM 60 DC INVERTER                 | cod. 63000063 | 4 x 200 mm              | 1044 X 227 mm | 2,177,00 |

### RETURN GRID

Return grille in PVC profile complete with frame and magnet filter



| PVC PROFILE RETURN GRILLE COMPLETE WITH FRAME AND MAGNET FILTER |               | €      |
|---|---------------|--------|
| GRILL 600 x 300 mm  | cod. 63000064 | 231,00 |
| GRILL 800 x 600 mm  | cod. 63000065 | 253,00 |
| GRILL 800 x 400 mm  | cod. 63000066 | 317,00 |

# COMMERCIAL LINE - DUCTABLE ACCESSORIES DC INVERTER

## Split system air conditioners

€



Multifunction wired remote control with follow me function, internal receiver and addressing

cod. 63000071

168,00



Wi-Fi control via smartphone or pad for R32 commercial series indoor units. App suitable for Android and iOS systems with all basic functions. Senior function, weekly timer, personalized sleep curve and self-control.

cod. 63000012

164,00



TWIN system kit, conversion from commercial range into dual split air conditioner

cod. 63000072

194,00



FLEX PIPE IN INSULATED PVC for ducts of 10 m - Ø 200

cod. 37900001

208,00



BRAGA to Y

cod. 65500020

50,00



DELIVERY PORT  
40x20 cm with adjustable blades complete with damper

cod. 37900070

98,00



CONNECTION PLENUM Ø 200  
40x20 cm between flex tube and delivery nozzle

cod. 37900019

146,00



ANCHOR BRACKETS FOR OUTDOOR UNITS  
for mod. 9 - 12 complete with anti-vibration kit  
for mod. 18 - 20 - 25 - 38 - 50 - 60 complete with anti-vibration kit

cod. 37081060

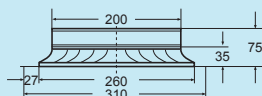
50,00

cod. 37081061

90,00



CIRCULAR DIFFUSERS Ø 200  
with millimetrically adjustable cones and butterfly calibration damper

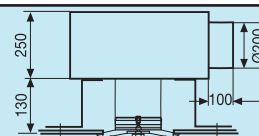


cod. 37900027

122,00



PLENUM CONNECTION Ø 200  
between flexible tube and circular diffuser with adjustable cones



cod. 379000031

210,00