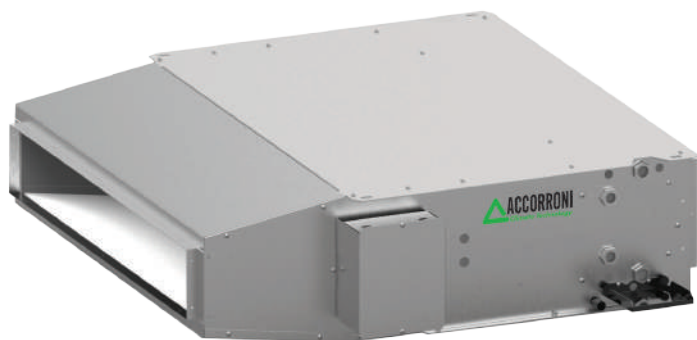


# LNH EC

Horizontal built-in ductable fan coils with extremely silent inverter fans



## Technical and construction characteristics

The LNH EC built-in horizontal fan coils have been designed to obtain maximum energy savings and maximum silence which are difficult to obtain with traditional air units such as splits, fan coils, etc. False ceiling installation is ideal for hotel rooms or the residential sector. Various models are available as options for wall or infrared regulation and control.

Its performance makes this product ideal for installations that require compliance with strict acoustic regulations. LNH EC is extremely silent thanks to its technical solutions: the careful study of an integrated silencer plenum and the use of a particular insulation with high sound-absorbing power. Digital thermostat with LCD display with advanced functions and interface card for the inverter fan to choose from among the accessories for controlling the LNH EC fan coil.

The insulation of the silencer plenum and the structure is made of ecological materials (recycled polyester fibre) with low environmental impact and closed cells.

LNH EC is designed for maximum convenience during maintenance: the fan, like the main tank and the battery can be inspected and quickly removed with the same procedure.



Model	Cooling power max kW	Thermal power max kW	Air flow m <sup>3</sup> /h Min / Med / Max	Code	€
LNH EC 3	2,44	2,46	190 / 236 / 368	52430000	850,00
LNH EC 6	3,84	3,96	424 / 499 / 652	52460000	1.040,00
LNH EC 8	5,51	5,52	525 / 681 / 824	52480000	1.170,00
LNH EC 12	7,35	7,74	646 / 811 / 1231	52412000	1.180,00

Cooling: air 27 °C b.d. - 19 °C b.w. - water inlet 7 °C, water outlet 12 °C

Heating: Air 20 °C - water inlet 45 °C, water outlet 40 °C







## Accessories LNH EC

	Delivery plenum with ductable fittings Ø 160 mm without insulation	mod. LNH EC 3 - 1 fitting mod. LNH EC 6 - 2 fitting mod. LNH EC 8/12 - 3 fitting	52430100 52460100 52480100	102,00 114,00 144,00
	Delivery plenum insulation	mod. LNH EC 3 mod. LNH EC 6 mod. LNH EC 8/12	52431903 52431904 52431905	30,00 34,00 38,00
	Intake plenum with ducted fittings Ø 160 mm without insulation	mod. LNH EC 3 - 1 fitting mod. LN EC 6 - 2 fitting mod. LNH EC 8/12 - 3 fitting	52430200 52460200 52480200	72,00 102,00 132,00
	90° intake plenum complete with telescopic connection, intake grille and filter	mod. LNH EC 3 mod. LNH EC 6 mod. LNH EC 8/12	52430400 52460400 52480400	240,00 306,00 390,00
	90° delivery plenum without insulation	mod. LNH EC 3 mod. LNH EC 6 mod. LNH EC 8/12	52430300 52460300 52480300	52,00 58,00 66,00
	90° delivery plenum insulation	mod. LNH EC 3 mod. LNH EC 6 mod. LNH EC 8/12	52432000 52462000 52482000	34,00 38,00 42,00
	Delivery grille with double adjustment in RAL 9016 white painted aluminium	mod. LNH EC 3 mod. LNH EC 6 mod. LNH EC 8/12	52430600 52460600 52480600	124,00 166,00 232,00

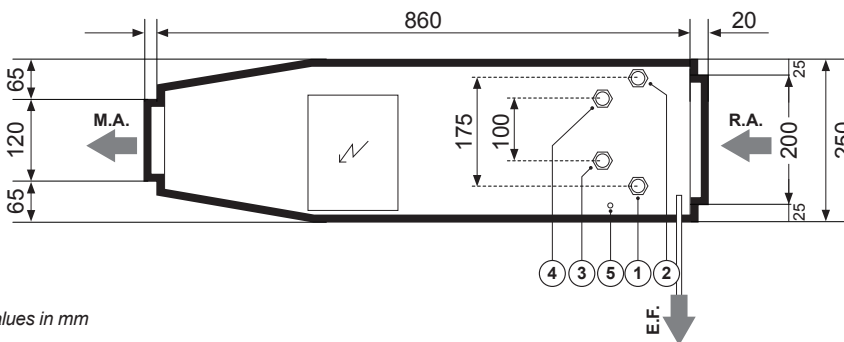
# LNH EC

Horizontal built-in ductable fan coils with extremely silent inverter fans

## Accessories LNH EC

		Code	€	
	Digital room thermostat with LCD display for daily/ weekly time programming and built-in consent probe	<b>36205224</b>	<b>140,00</b>	
	LNH inverter fan interface card mandatory for the application of the thermostat Digital room thermostat with LCD display	<b>52431902</b>	<b>110,00</b>	
	1-row auxiliary coil for 4-pipe systems	<b>mod. LNH EC 3</b>	<b>52430800</b>	<b>108,00</b>
		<b>mod. LNH EC 6</b>	<b>52460800</b>	<b>120,00</b>
		<b>mod. LNH EC 8/12</b>	<b>52480800</b>	<b>150,00</b>
	High efficiency ISO 16890 COARSE (EX G3) class synthetic fiber filter	<b>mod. LNH EC 3</b>	<b>52430700</b>	<b>52,00</b>
		<b>mod. LNH EC 6</b>	<b>52460700</b>	<b>58,00</b>
		<b>mod. LNH EC 8/12</b>	<b>52480700</b>	<b>68,00</b>
	Drain pump condense	<b>pump kit not mounted</b>	<b>52431600</b>	<b>240,00</b>
		<b>horizontal pump kit mounted</b>	<b>52431700</b>	<b>272,00</b>
	3-way ON-OFF valve with by-pass with 4 connections, mounted on the machine for 2-pipe systems	<b>mod. LNH EC 3 - 6 - 8</b>	<b>52431906</b>	<b>174,00</b>
		<b>mod. LNH EC 12</b>	<b>52431907</b>	<b>186,00</b>

## Dimensions and weights LNH EC (standard execution right-hand connections)



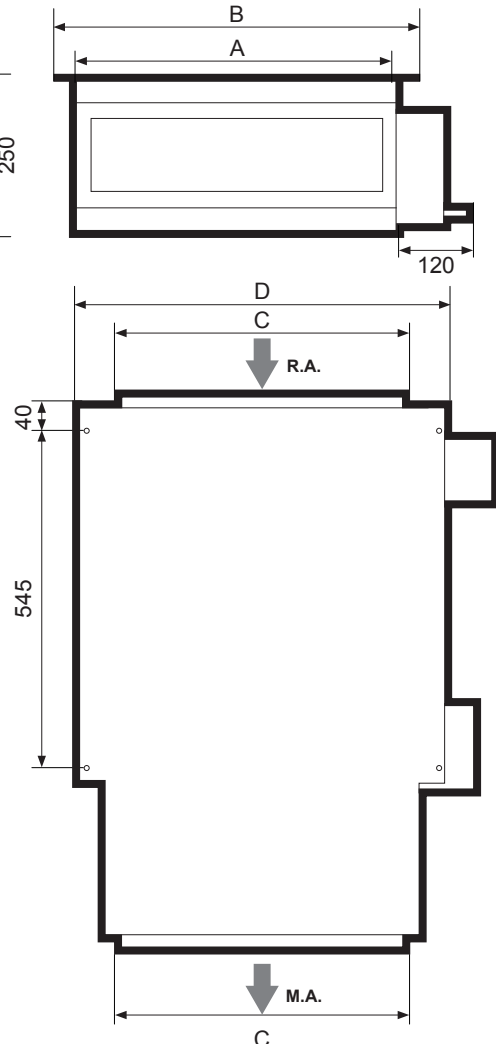
Values in mm

Mod.	U.M.	3	6	8	12
Dimensions A	mm	520	780	1040	1040
Dimensions B	mm	600	860	1120	1120
Dimensions C	mm	475	735	995	995
Dimensions D	mm	568	828	1088	1088
<b>R.A.</b>		Intake air			
<b>M.A.</b>		Delivery air			
<b>E.F.</b>		Filter extraction			
<b>1</b> Main battery INPUT				1/2"	
<b>2</b> Main battery OUTPUT				1/2"	
<b>3</b> Auxiliary battery INPUT				1/2"	
<b>4</b> Auxiliary battery OUTPUT				1/2"	
<b>5</b> Condensate drain diameter	mm		16		
Weight	Kg	25	33	42	42
Main battery internal volume	l	1,06	1,59	2,16	2,43
Internal volume of auxiliary battery	l	0,26	0,40	0,54	0,68

### Diameter of the supply and return plenum connections LNH EC

Ø mm 160	n. fori	1	2	3	3
----------	---------	---	---	---	---

The standard unit has hydraulic connections on the right;  
When ordering, it is possible to request the unit with the connections on the left



# LNH EC

Horizontal built-in ductable fan coils with extremely silent inverter fans

## Technical data table LNH EC

DESCRIPTION		U.M.	LNH EC 3	LNH EC 6	LNH EC 8	LNH EC 12
Air flow	max	m <sup>3</sup> /h	368	652	824	1231
	med	m <sup>3</sup> /h	236	499	681	811
	min	m <sup>3</sup> /h	190	424	525	646
<b>Cooling - aria 27 °C b.d., 19 °C b.w. - water inlet 7 °C, outlet 12 °C</b>						
Total cooling capacity	max	kW	2,44	3,84	5,51	7,35
	med	kW	1,72	3,13	4,76	5,45
	min	kW	1,44	2,75	3,88	4,57
Sensible cooling capacity	max	kW	1,77	2,83	4,00	5,49
	med	kW	1,22	2,27	3,41	3,95
	min	kW	1,01	1,97	2,74	3,26
Water flow	max	l/h	421	663	952	1276
	med	l/h	297	540	822	943
	min	l/h	249	475	669	789
Δp water	max	kPa	23,1	11,9	24,5	47,5
	med	kPa	12,1	8,1	21,0	27,1
	min	kPa	8,7	6,4	14,3	19,4
<b>HEATING - air 20 °C - water inlet 45 °C, outlet 40 °C</b>						
Total thermal power	max	kW	2,46	3,96	5,52	7,74
	med	kW	1,67	3,14	4,68	5,45
	min	kW	1,37	2,72	3,71	4,47
Water flow	max	l/h	423	682	950	1328
	med	l/h	287	541	806	937
	min	l/h	236	468	640	769
Δp water	max	kPa	21,0	11,4	24,7	46,1
	med	kPa	10,2	7,4	18,1	24,0
	min	kPa	7,0	5,6	11,8	16,6
<b>ELECTRICAL ABSORPTION OF MOTORS</b>						
Absorption	max	W	13	19	27	74
	med	W	8	13	19	28
	min	W	7	10	13	18
Max absorption		A	0,19	0,27	0,26	0,67
<b>SOUND DATA</b>						
Sound power recovered + radiated	max	dB(A)	42	42	45	53
	med	dB(A)	34	36	41	44
	min	dB(A)	31	33	35	39
Sound power received + radiated*	max	dB(A)	30	39	33	39
	med	dB(A)	22	33	29	30
	min	dB(A)	19	30	23	25
Sound power sent	max	dB(A)	39	39	42	50
	med	dB(A)	31	33	38	41
	min	dB(A)	28	30	32	36
Sent sound power*	max	dB(A)	27	27	30	36
	med	dB(A)	19	21	26	27
	min	dB(A)	16	18	20	22
<b>LIMITS OF USE</b>						
Power supply			230V/1/50Hz			
Battery inlet water temperature		°C	+3 / +70			
Maximum air delivery temperature		°C	50			
Air intake temperature		°C	+10 / +50			

(\*) = Values provided as a guideline for units with non-ducted intake and with ducted exhaust and for the attenuation of the room and installation of 12 dB (mod. 3 - 6 - 8) and 14 dB (mod. 12).