

AGTF SOL

Floor standing storage gas water heater with sealed chamber forced draft with electronic ignition with additional exchanger for solar thermal



WATER HEATER GAS



PAIRING SOLAR THERMAL



HOT WATER SANITARY

Technical and construction features

The AGTF SOL series water heaters are classified as gas-fired hot water generators with sealed combustion chamber with atmospheric burner equipped with a fan in the combustion circuit. The appliances belong to category II2H3 +, which means that they can use gases of the second family (natural gas) and of the third family (liquid gases, butane and propane).

According to the European standard EN 483, these gas water heaters are distinguished according to the system used for air intake and exhaust fumes: type C13, C23 and C53.

In all three cases, the combustion circuit is sealed with respect to the environment in which the water heater is installed and the fan that ensures the expulsion of the fumes is upstream of the combustion circuit. These appliances require a drain kit.

A flange is inserted in the central part of the water heater for integration to the production of domestic hot water through forced circulation solar thermal.

Are offered n. 4 models of heat exchanger in finned copper tube for a correct combination with the available solar thermal surface. The following table exemplifies the choice of the water heater model and the relative solar surface on average useful for the purpose, depending on the number of people. A more accurate selection can only be made on a case-by-case basis based on location, exposure

Model	Thermal range kW	Thermal power kW	Code	€
AGTF SOL 220	30,00	26,80	37301200	5.732,00
AGTF SOL 300	34,00	30,60	37301201	6.162,00
AGTF SOL 500	34,00	30,60	37301203	7.648,00

Accessories AGTF SOL

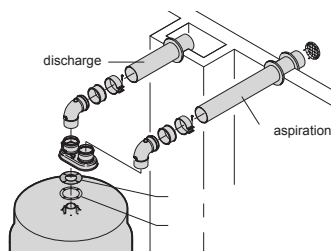
Integrative solar heat exchanger with direct exchange in finned copper



Mod.	Volume l	Surf. pannel solar m ²	Surface exchanger m ²	number people
220	212	2,4	1,0	2 - 3
300	310	4,8	1,0	3 - 4
500	510	9,6	1,5	6 - 7

Exchanger da 1,0 m ²	37310001	590,00
Exchanger da 1,5 m ²	37310002	800,00

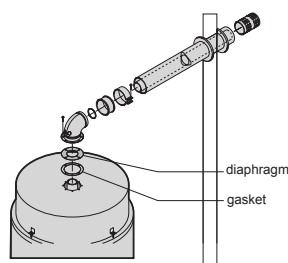
Split exhaust kit AGTF 220 ÷ 800 the standard kit is 1 meter and contains:



horizontal drain kit 80-120
split exhaust kit 80-120
vertical outlet kit 80-120 coaxial
extension Ø 60/38 cm 100 coaxial
bend Ø 60/38 at 90° coaxial bend
Ø 60/38 at 45° bend Ø 60 at
90° bend Ø 60 a 45°

bend Ø 60 at 45° bend Ø 38 at 90° bend Ø 38 at 45° wall cover rose Ø 60 wall cover rose Ø 38 lead tile	37310101	350,00
---	-----------------	---------------

Horizontal coaxial drain kit AGTF 220 ÷ 800 the standard kit is 1 meter and contains:



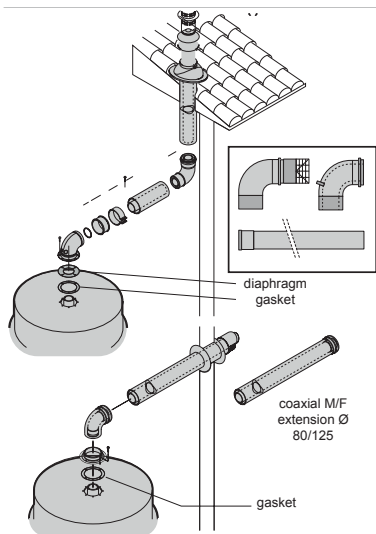
horizontal coaxial drain kit
AGTF 220/300/400/500
the standard kit is 1 meter and contains:
- n. 1 coaxial pipe Ø 60/100 with terminal
- n.1 90° flanged bend Ø 60/100 flanged
- n. 2 wall cover rosettes Ø 100
- n. 1 clamp with gasket Ø 100
Max length without direction changes = 3 m

37310102	210,00
-----------------	---------------

AGTF SOL

Floor standing storage gas water heater with sealed chamber forced draft with electronic ignition with additional exchanger for solar thermal

Accessories AGTF SOL



vertical drain kit AGTF SOL 220 ÷ 500
the standard kit is 1 meter and contains:
- n. 1 vertical terminal Ø 60/100 of 1 m
- n. 1 clamp with gasket Ø 100
Max length without direction changes = 3 m

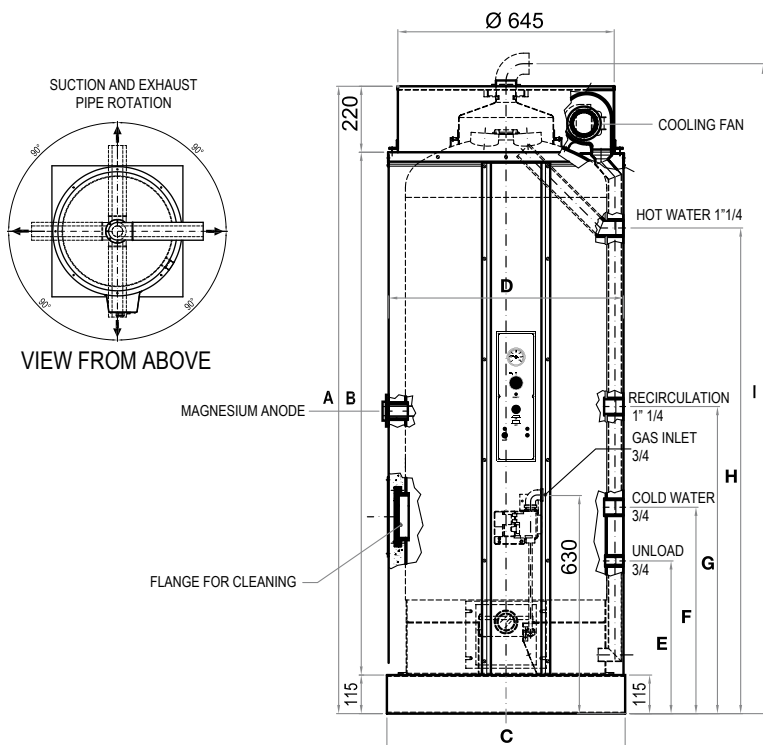
coaxial bend Ø 60/100 at 90 ° not flanged
1 m coaxial extension Ø 60/100 at 90°
extension Ø 80 at 90° from 1 m
90 ° flanged coaxial bend Ø 60/100
air diaphragm Ø 71
air diaphragm Ø 74
air diaphragm Ø 80 included
bend Ø 80 at 90°

coaxial wall drain kit AGTF SOL 500

- 2 m coaxial suction Ø 80/125
- coaxial M / F extension Ø 80/125

Code	€
37310103	430,00
37310104	170,00
37310105	190,00
37310106	130,00
37310107	160,00
37310108	50,00
37310109	50,00
37310110	50,00
37310111	80,00
37310112	280,00
37310113	180,00

Dimensions AGTF SOL



Mod.	220	300	500
A	1600	1950	2036
B	1265	1615	1700
C	710	710	810
D	700	700	800
E	480	480	460
F	645	645	625
G	890	950	1026
H	1170	1460	1595
I	1700	2050	2136

Values in mm

Water heater technical data tabl AGTF SOL 220÷500

DESCRIPTION	U.M.	AGTF SOL 220	AGTF SOL 300	AGTF SOL 500
Thermal range	kW	30,00	34,00	34,00
Thermal power	kW	26,80	30,60	30,60
Gas flow rate	Methane G20 m ³ /h	3,17	3,60	3,60
Max power	Butane G30 kg/h	2,13	2,50	2,50
15 °C - 1.013 mbar	Propane G31 kg/h	2,13	2,50	2,50
Warm-up time 45 °C	min.	15	17	29
Continuous sampling 45 °C	l/h	921	1052	1052
Maximum water pressure	bar		6	
Hydraulic connections			1" 1/4	
Gas supply diameter			1/2"	
Smoke outlet diameter	mm		coaxial 60/100	
Power supply			230V/1/50Hz	
Empty weight	Kg	142	166	207
Operating weight	Kg	354	476	717