

DOMUS PELLETT

Hydro pellet stoves



Thermo- stove hydro
DOMUS PELLETT 14

NEW

Efficiency

η
94,2

Heating



Thermo- stove hydro
DOMUS PELLETT 18
DOMUS PELLETT 22



Specifications

The stoves are heat generators capable of performing simultaneously the function of a heater and a boiler. In fact, in addition to hot air emission to the indoor environment in which the heater is installed, DOMUS PELLETT can be connected to the heating hydro terminals in the house.

DOMUS PELLETT is equipped with a fume/ water exchanger so as to collect the heat and transfer it to the water in the plant, both for heating and for the production of sanitary hot water.

The control of the thermal power is managed automatically by the integrated electronic panel, which manages all the programming of

the system.

With a few commands it sets the temperature that the heater will maintain during the entire heating period. The possibility of using the built-in thermostat allows you to operate the heater DOMUS PELLETT automatically and put into time programming.

DOMUS PELLETT is compact and aesthetically pleasing to offer maximum comfort for every type of environment.

The side panels of the heater are offered in two colors, red or cream to suit the furnishings in the house.

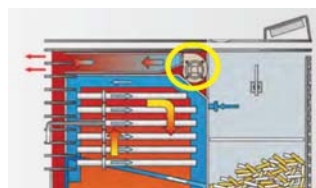
MODEL		THERMAL POWER kW	THERMAL CAPACITY kW	€
Thermo-stove DOMUS PELLETT 14	cod. 37945001	12,5	13,6	4.120,00
Thermo-stove DOMUS PELLETT 18	cod. 37945002	16,1	17,7	4.760,00
Thermo-stove DOMUS PELLETT 22	cod. 37945003	19,4	21,7	5.100,00

ADVANTAGES DOMUS PELLETT



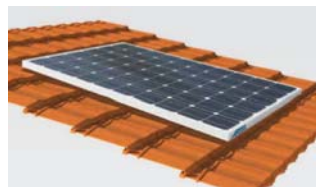
GREAT SAVINGS

The system, with pellet heats the air and water in the radiators, toilets and plant floor while providing a savings of up to 60% compared to traditional heating



VENTILATION STANDARD

Ventilation standard to distribute warm air into the locals



INTEGRATED SYSTEM

The heater allows you to double your savings when integrated with the photovoltaic and / or solar



THERMO-STOVE DOMUS PELLETT 14

The back of the boiler contains 6 pipes along which, are placed 6 turbulators which give to the fumes a turbulent and centrifugal flow.

The water flows in opposite current to the fumes that in this way, gives the maximum of their heat



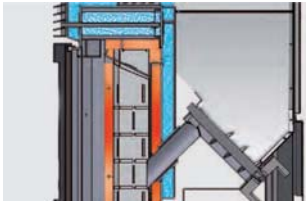
THERMO-STOVE DOMUS PELLETT 18-22

The water is heated gradually along the boiler of the stove with capacity 20 l.

Then the water flows through the heat exchanger formed by tubes 14 which is invested by fumes coming from the combustion chamber. In order increasingly hot, the water reaches a collection basin placed on top of the stove to absorb heat of the heating stove

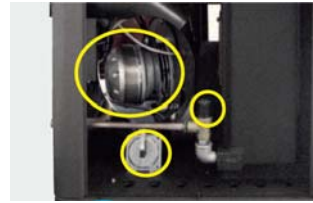
DOMUS PELLETT

Hydro pellet stoves



OPTIMIZED GAS PATH

The fumes of the combustion chamber rise towards the tube bundle and then, after passing the fire plate, flow towards the side walls of the combustion chamber. Along these walls give all their heat to the water tank thus ensuring high efficiency



SECURITY SYSTEMS

The stoves are equipped with multiple safety systems including: automatic vent valve, pressure switch, safety valve, water temperature sensor of the boiler with safety thermostat.



WATER CONNECTIONS

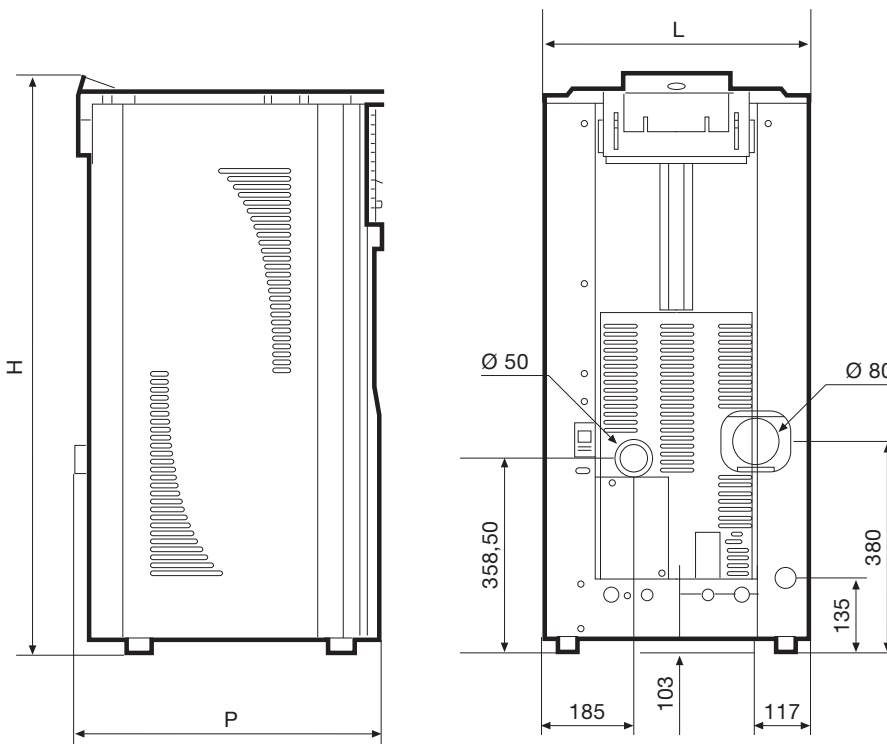
The heater comes complete with all the hydraulic elements to heat the water and can be easily inspected for maintenance and cleaning



ASH TRAY

Double ash tray and then give inspection to the fumes extractor fan

Dimensions DOMUS PELLETT



Model	L	H	P
DOMUS PELLETT 14	475	964	489
DOMUS PELLETT 18	534	1.085	582
DOMUS PELLETT 22	534	1.085	582

Values expressed in mm

Technical DOMUS PELLETT stoves

DESCRIPTION	U.M.	DOMUS PELLETT 14	DOMUS PELLETT 18	DOMUS PELLETT 22
Global heat flow	kW	13,61	17,7	21,7
Thermal power min - max	kW	4,17 - 12,46	7,70 - 16,10	7,70 - 19,40
Water heat output min - max	kW	10,48 - 3,32	12,30 - 5,90	15,60 - 5,90
Power output environment	kW	1,98 - 0,85	3,80 - 1,80	3,80 - 1,80
Hourly consumption at min - max	kg / h	0,9 - 2,8	3,6 - 1,65	1,65 - 4,4
Efficiency min - max	%	94,72 - 91,77	94,18 - 90,98	94,18 - 89,73
Chimney connector	mm	80	80	80
Fuel tank capacity	l - Kg	26,2 - 17	38,5 - 25	38,5 - 25
Burn time min - max	h	25 - 6,5	15 - 7	6 - 15
Electrical power to exercise	W	110 - 320	140 - 350	140 - 350
weight	Kg	140	190	190

DOMUS PELLETT DHW

Hydro pellet stoves with technical accumulation and DHW



Thermo-stove hydro
DOMUS PELLETT
14-18-22



NEW

Heating

Efficiency

η

94,2

DHW

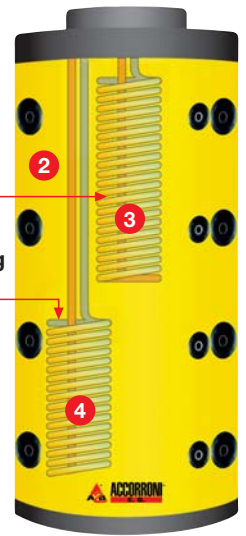
DOMUS PELLETT DHW INCLUDES:

- 1 THERMOSTOVE HYDRO PELLETT DOMUS
- 2 STORAGE TANK 300 LITRES A_RM1
- 3 RAPID EXCHANGE DHW
- 4 EXCHANGER MOTO- EVAPORATING BOOSTER

technical
accumulation
inertial
mod. A_RM1
300 litri

exchanger
quick DHW

exchanger
Moto-evaporating
Booster



Specifications

DOMUS PELLETT is equipped on the inside of a flue gas heat exchanger water so as to collect the heat and transfer it to the accumulator technical inertial both for heating and for the production of sanitary hot water.

The control of the thermal power is managed automatically by the electronic integrated panel, simple and intuitive that manages all the programming of the heating system.

The heat exchanger is designed to be coupled to the accumulator A_RM1 300 liters of water (see page 33.) Ideal for the production of domestic hot water to provide to users.

The water storage technique A_RM1 300 liters is fitted as standard with two heat exchangers: the first removable upper heat exchanger for instant DHW remedy to the problem of legionella, the second heat

exchanger to lower the application of a booster pump heat which supplements or replaces optimally heater during the year does not particularly cold in which the heat pump is, given the high COP, much cheaper than biomass (the Booster are supplied as an accessory see page 34).

The particular shape of the tank and the heat exchangers board seats allows to optimize the production of sanitary hot water by making available large amounts of water and excellent comfort.

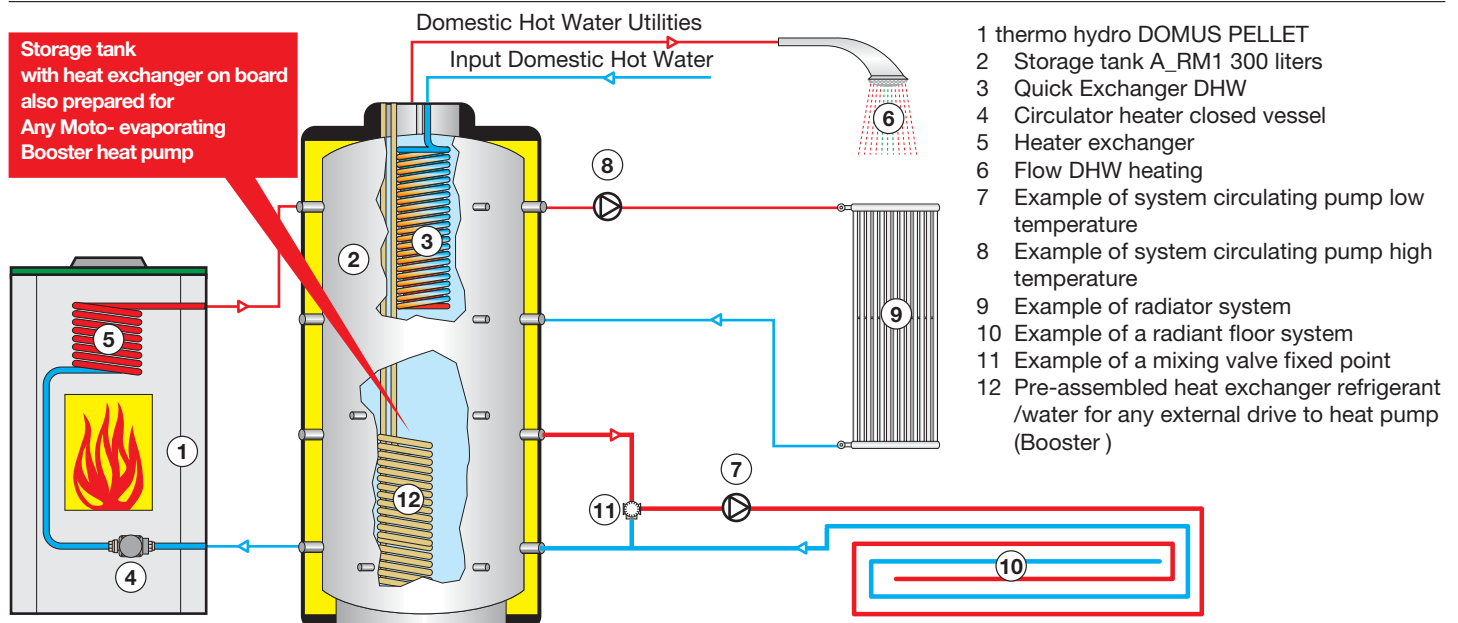
With a few commands sets the temperature that the heater will maintain during the entire heating period.

DOMUS PELLETT is compact and aesthetically pleasing to offer maximum comfort for every type of home environment.

The side panels of the heater are offered in two colors, red and cream to suit the furnishings of the house.

MODEL		THERMAL POWER	THERMAL CAPACITY	€
		kW	kW	
DOMUS PELLETT DHW 14	cod. 37945101	12,5	13,6	7.080,00
DOMUS PELLETT DHW 18	cod. 37945102	16,1	17,7	7.720,00
DOMUS PELLETT DHW 22	cod. 37945103	19,4	21,7	8.060,00

Plant layout DOMUS PELLETT DHW (pellet feed with heat exchanger on board for heat pump)



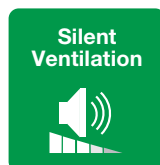
KING PELLET

Hydro pellet stoves



Thermo-stove hydro
KING PELLET 24

NEW



Thermo-stove hydro
KING PELLET 34



Specifications

Le termostufe KING PELLET 24 - 34 possono essere alimentate oltre che da pellet, anche con nocciolino di sansa, gusci di nocciole, gusci di mandorle; tutti elementi bio compatibili e rinnovabili.

Le termostufe KING LEGNA 24 - 34 sono dotate di turbolatori che ne fanno aumentare il rendimento.

L'innovativo braciere in acciaio inox brevettato TWIN FLAME garantisce

una perfetta combustione e la manutenzione ordinaria delle termostufe KING PELLET 24 - 34 risulta molto semplice con più pulizia ed un migliore funzionamento.

Le termostufe KING PELLET 24 - 34 possono essere richieste con rivestimento in acciaio o in ceramica che offre all'ambiente più armonia e più eleganza.

MODEL	RED code	IVORY code	COPPERED code	LEATHER code	€
Thermostove KING PELLETS 24 steel	37946001	37946002	37946003	-	6.900,00
KING 24 ceramic heating stove pellets	37946101	37946102	-	37946103	7.520,00
Termostufa KING PELLETS 34 steel	37947001	37947002	37947003	-	8.080,00
KING 34 ceramic heating stove pellets	37947101	37947102	-	37947103	8.970,00

ADVANTAGES KING PELLETS



TWIN FLAME

The new patented burner stainless steel TWIN FLAME 304 ensures a perfect combustion with low particulate minimizing CO emissions



POWER ECONOMY

With this function, the time consumption of the burner TWIN FLAME steel 304 is reduced to 0.5 kg of pellets



PROGRAMMING UNIT

Equipment Command and control with simple and intuitive display and built-in thermostat



MAINTENANCE

The design of innovative PELLET stoves KING 24 - 34 has been designed to offer customers the ease and simplicity of maintenance



REMOTE CONTROL

The control unit for switching on and off can be supplied remote control through the purchase of the remote control (optional)



MULTI FUEL

The patented burner TWIN FLAME can work either with pellets, peanut residue, nut shells or shells of almonds. All these elements are bio-compatible and renewable

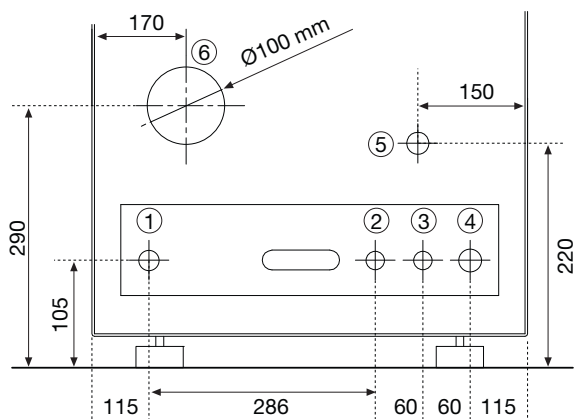
KING PELLET

Hydro pellet stoves

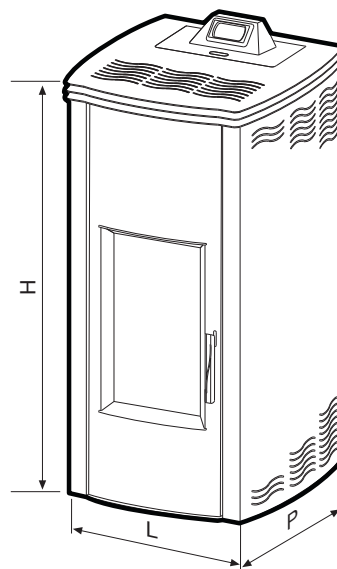
Dimensions KING PELLETS

Connections KING PELLET 24 - 34

- 1) System flow: M 3/4"
- 2) Entry aqueduct: M 1/2"
- 3) Hot water outlet: M 1/2"
- 4) Return system radiators: M 3/4"
- 5) Safety discharge: F 1/2"
- 6) Connection to the chimney: Ø 100 mm



Rear View



	24	34
H	1112	1312
L	660	660
P	665	665

Values expressed in mm

Technical data table KING PELLET 24 - 34

DESCRIPTION	U.M.	KING PELLET 24	KING PELLET 34
Nominal heat output	kW	24	34
Heat output in heating	kW	22,5	31,5
Heat output to water	kW	18	26
DHW production	l/min	12	14
Flue outlet	mm	100	
Diameter flow / return radiators		3/4"	
Diameter Input / Output ACS		1/2"	
Diameter automatic discharge		1/2"	
Maximum operating pressure	bar	2,8	
electrical power	W	320	
power Supply		230V/1/50Hz	
Minimum draft	Pa	12	14
performance	%	92	93
CO measured at 13 % O2	%	0,02	
flue gas temperature	°C	180	170
Hourly consumption at max power	kg	4,6	5,9
Hourly consumption at min power	kg	2	3
Average hourly consumption in modulation of 8 hours of operation	kg	2,9	4
Hourly consumption power economy	kg	0,75	
Fan speed	n.	4	
burner		INOX 304 Patented	
Capacity of tank	kg	30	45
Average area heated	m ²	180	250
weight	kg	210	250

KING PELLET MAX

Hydro Pellet Boilers



boiler Idro
KING PELLET
MAX 24-34

NEW



box pellet
150 kg
(accessory)

Specifications

The multifuel boilers PELLET KING MAX 24 - 34 are designed to provide a real alternative to traditional sources of home heating for those who can not or do not want to put a heater in the home. These products combine the characteristics of residential stoves

24/34 kW greater autonomy thanks to accessories such as additional tank (150 kg pellet box) that minimize the frequency of routine maintenance.

MODEL		NOMINAL THERMAL POWER kW	RETURNED THERMAL CAPACITY kW	€
PELLET boiler KING MAX 24	cod. 37948001	24,0	18,0	6.950,00
PELLET boiler KING MAX 34	cod. 37948002	22,5	31,5	8.090,00



TWIN FLAME

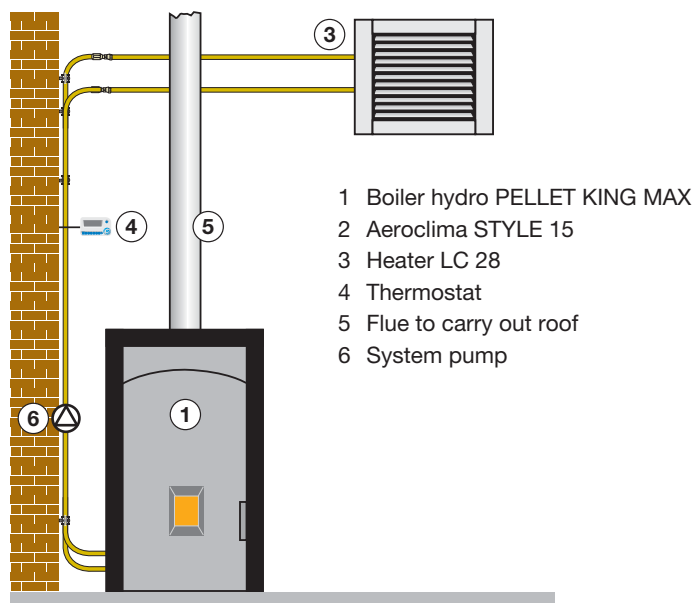
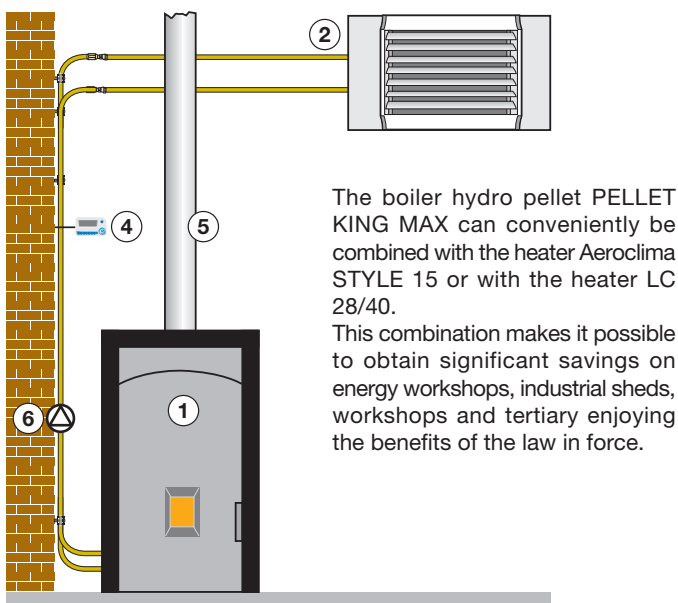
The new patented burner stainless steel TWIN FLAME 304 ensures a perfect combustion with low particulate minimizing CO emissions.



MULTI FUEL

The patented burner TWIN FLAME can work either with pellets, peanut residue, nut shells or shells of almonds. All these elements are bio-compatible and renewable.

Plant layout KING PELLET MAX with installation inside a building is not subject to fire prevention



KING PELLET MAX

Hydro Pellet Boilers

Dimensions PELLET KING MAX

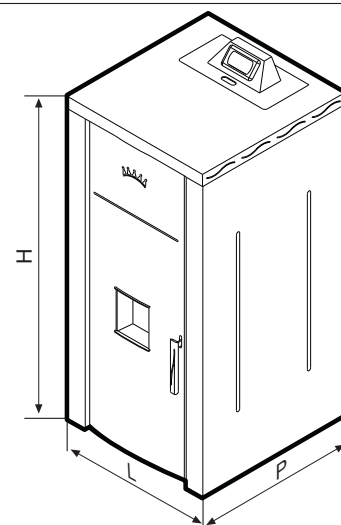
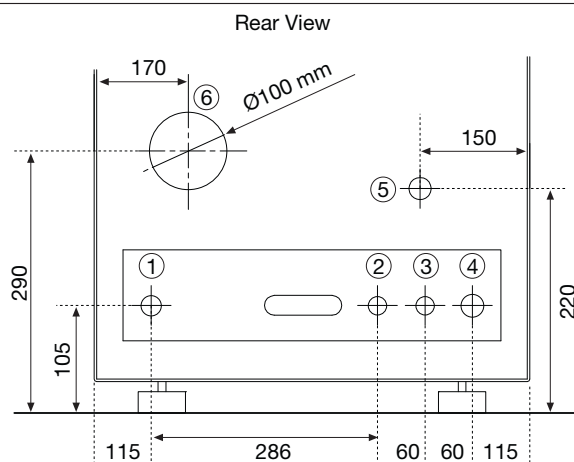
Connections

KING PELLET MAX 24 - 34

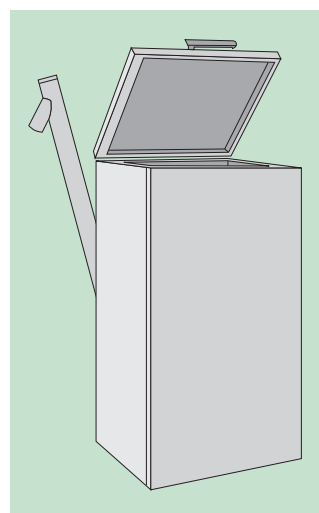
- 1) System flow: M 3/4"
- 2) Entry aqueduct: M 1/2"
- 3) Hot water outlet: M 1/2"
- 4) Return system radiators: M 3/4"
- 5) Safety discharge: F 1/2"
- 6) Connection to the chimney: Ø 100 mm

	24	34
H	111,2	131,2
L	63	63
P	66,5	66,5

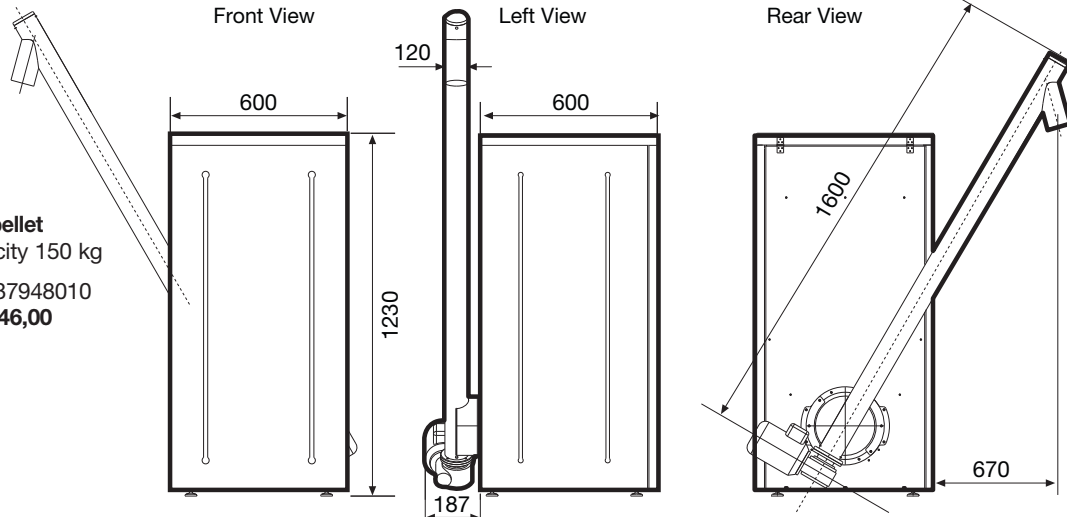
Values are expressed in mm



Accessories PELLET KING MAX 24 - 34



Box pellet
capacity 150 kg
cod. 37948010
€ 2.146,00



Technical data table PELLET KING MAX 24 - 34

DESCRIPTION	U.M.	KING PELLET MAX 24	KING PELLET MAX 34
Nominal heat output	kW	24	34
Heat output in heating	kW	22,5	31,5
Heat output to water	kW	19	27
DHW production	l/min	12	14
Flue outlet	mm	100	
Maximum operating pressure	bar	2,8	
Electrical power	W	320	
Power Supply	Pa	230V/1/50Hz	
Minimum draft	%	12	14
Performance	%	93	94,5
CO measured at 13 % O2	°C	0,02	
Flue gas temperature	kg	180	170
Hourly consumption at max power	kg	4,6	5,9
Hourly consumption at min power	kg	2	3
Average hourly consumption in modulation of 8 hours of operation	kg	2,9	4
Hourly consumption power economy	n.	0,75	
Burner		TWIN FLAME INOX 304 Patented	
Capacity of tank	kg	30	45
Average area heated	m ²	180	250
Weight	kg	190	230